

ARTIST

Gina Beavers



Gina Beavers

1-2-3 Palette

2015

acrylic on wood on canvas on panel with wood frame

79 x 79 cm

31 x 31 in





Gina Beavers

Gina Beavers' primary source of inspiration is the ubiquitous contemporary visual culture, especially the one emerging from social media. Dealing initially with references taken from the original pop movement of the 1950's, Beavers evolved to paint the 'current pop,' starting to search on social media for image templates to her extravagant, thickly layered relief-like acrylic compositions. Beavers' anthropological interest in society translates in paintings that explore the banality of internet: makeup tutorials, the so called food-porn pictures, body builder selfies. In tune with the eccentricity of her artistic process, the artist maximizes the visual potential of her medium, taking tridimensionality to its higher possible level and bringing painting closer to some sort of sculpture.

In 2019, Beavers had a solo exhibition at MoMA PS1, and in 2020 she was part of a group show in the Frans Hals Museum in Haarlem. She has a BA in Studio Art and Anthropology and a MFA in Painting and Drawing. Born in 1978 in Athens, she currently lives and works in New York.

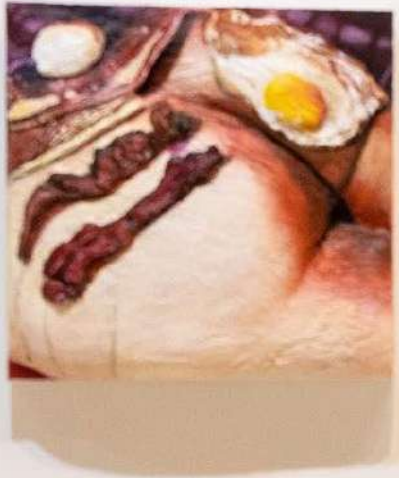




Installation view: Gina Beavers' solo show *The Life I deserve* at MoMA PS1 in 2019



Installation view: Gina Beavers' solo show *The Life I deserve* at MoMA PS1 in 2019



Installation view: Gina Beavers' solo show *The Life I deserve* at MoMA PS1 in 2019



I developed that way of working through struggling with the heavy paint I use; it interferes with my skill. I'm taking photographs when I'm working on it; I'm stepping back and forth. It is a kind of a battle with the medium, which is challenging but also really satisfying.

Gina Beavers





Installation view: Gina Beavers' works in the group show *Image Power* at the Museum Frans Hals in 2020



Installation view: Gina Beavers' works in the group show *Image Power* at the Museum Frans Hals in 2020

Gina Beavers

Surreal

2019

acrylic on on linen on panel

50.8 x 50.8 cm

20 x 20 in



Gina Beavers

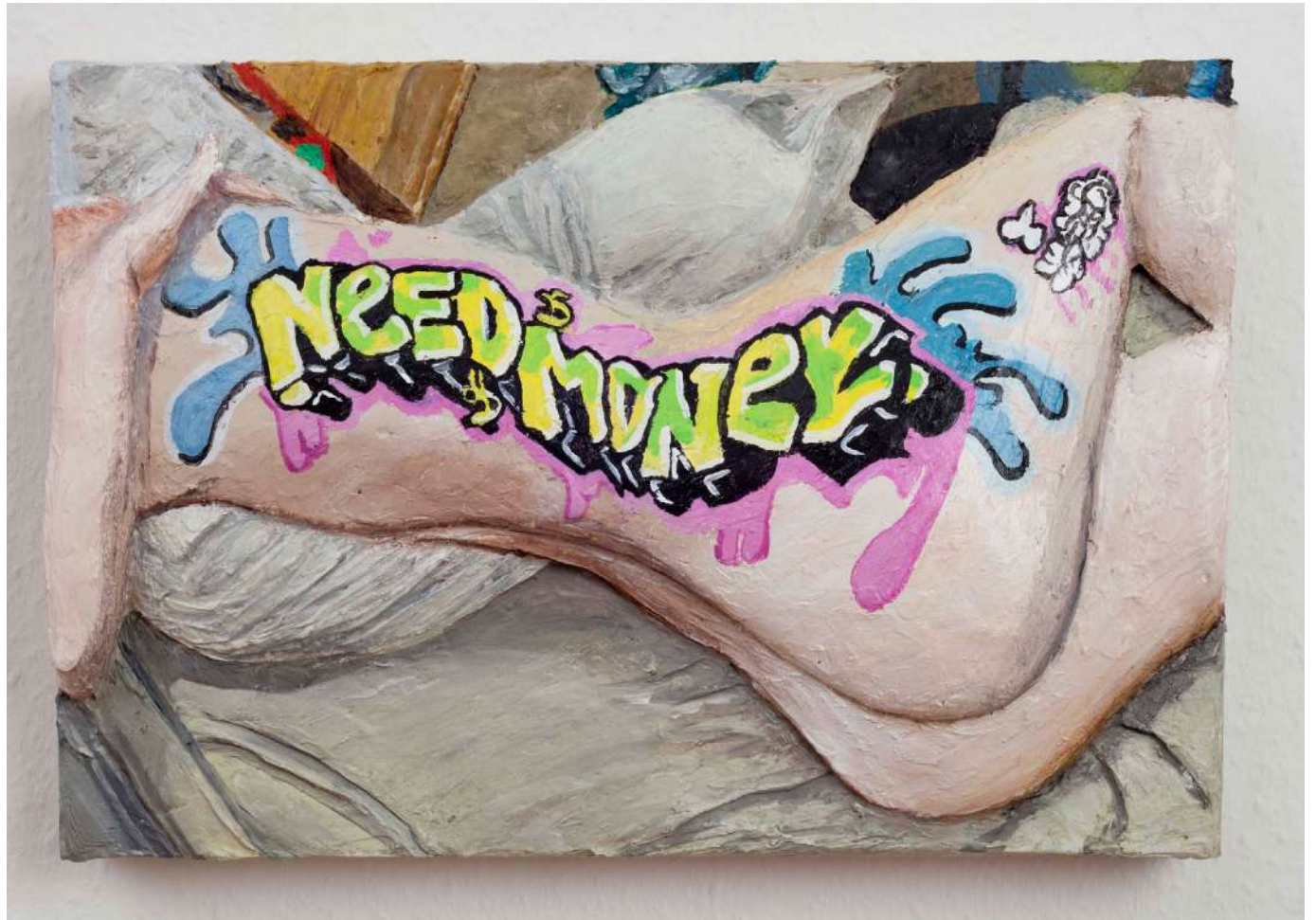
Need Money

2019

acrylic on on linen on panel

30.48 x 45.72 cm

12 x 18 in



Gina Beavers

We're not dating, abstraction

2019

acrylic on on linen on panel

40.64 x 40.64 cm

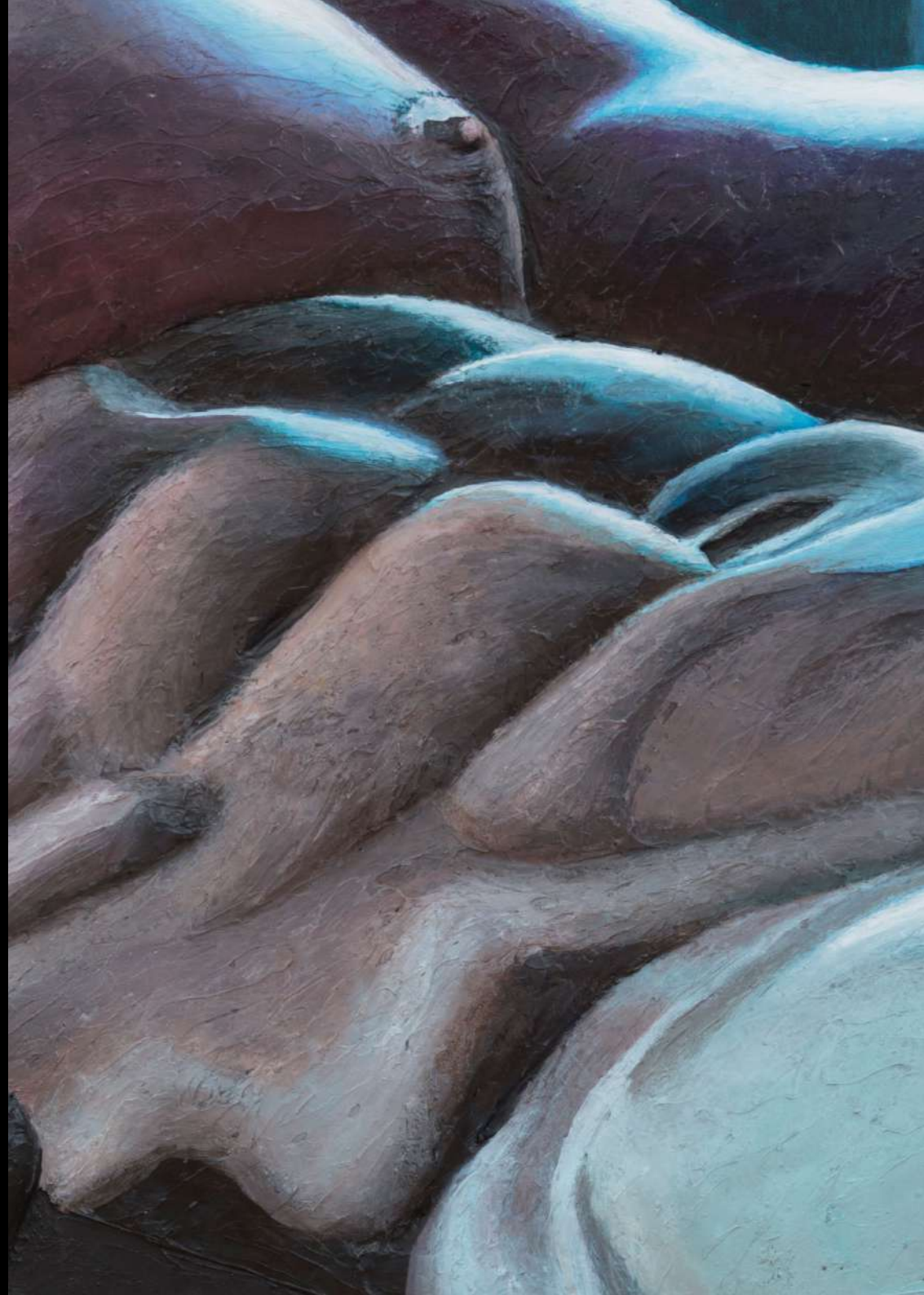
16 x 16 in





When I first went to the college, I wanted to be a doctor. Because my whole family are educators and artistic people, they were so excited about my choice, that they would finally have a doctor in the family! I studied for a year and then decided that this is not for me, instead it became anthropology and art. I can't help but think that some of my interest in the body reflects that early interest in medicine.

Gina Beavers





Gina Beavers

86 Likes

2019

acrylic on linen on panel

50.8 x 50.8 cm

20 x 20 in



Gina Beavers

Ambitchous

MARCH 11 - APRIL 23, 2017

The process of digitization has radically altered the political, economic, and cultural function of the image – there can be no doubt about that. It remains to be seen if, and on what plane, art is capable of sustainably responding to this regime as a social site of reflexive image production, and the extent to which it can create images which have the strength to resist the normalizing tendency of digital codes (after all, codes do not tolerate substantive argument).

According to the universal rule of the media-theorist Marshall McLuhan, the “content of any medium is always another medium” (*Understanding Media: The Extensions of Man*, 1964). With this in mind, it can certainly be assumed that within digital media, neither (over) affirmative nor critical interrogations of new technologies, their means of image production and/or their social consequences will be capable of communicating a sufficiently complex depiction of this new regime to society – even if such strategies might expand the spectrum of conceivable and pre-existing images within it. But a reflection of the structure – which is the prerequisite for images coming to be understood and utilized in a fundamentally different way – requires detachment, a sense of removal, and one of the ways in which this becomes possible is through a change of art form.

Against this backdrop, the American artist Gina Beavers focuses on the uniform, “affect-hungry” visual language of the internet, using the (perhaps ostensibly unsuited) medium of panel painting.

The impact of a painting is founded on its singularity (by definition, no picture/series of pictures is identical to another) and a duration of time, which has to bestow the parallel planes of perception present in the picture in a temporal sequence over the course of the act of viewing. In this sense, it is in principle opposed to how a digital image typically operates. However Beavers makes use of this discrepancy by singling out just one image from millions of similar photos – for example, from the popular genre of ‘food porn’, which charges photographs of lavishly prepared meals with (sexual) desire, or from the deluge of make-up tutorials which regulate the self-image of women – to translate it into a painting. In subjecting this image to another logic, she divests it of its natural quality and uses painting as an analytical tool. The viewer is no longer looking at photographic tableaux composed of freeze-frames taken from make-up tutorials, but rather paintings about make-up tutorials, which present the aesthetic and formal parameters of this particular class of images, which exist exclusively on the net.

The unvarnished quality of these paintings is at once attractive and repulsive: really, the images are too direct, they reveal their made-ness too cheaply, seem too calculated and sensationalist to be viewed as simply “beautiful”. Interestingly though, it is precisely



Installation view: Gina Beavers, *Ambitious* solo exhibition at GNYP Gallery in 2017

these qualities which arouse the desire to nevertheless look at the images, as if Beavers were tempering their sexiness with a dash of vulgarity, and through this, augmenting the (perverse?) pleasure in the paintings.

In her current exhibition, conventional make-up instructions for applying lipstick or eyeshadow are juxtaposed with carnivalesque instructions for dressing up as cartoon characters, such as the legendary bio-exorcist Beetlejuice, the nasty fashion designer Cruella de Vil from the Disney classic 101 Dalmatians, or the Snow Queen Elsa from the animated adaptation of the eponymous Hans Christian Andersen fairy tale. So it isn't protagonists with positive connotations which are favoured by the artist, but unmistakably ambivalent characters who could undoubtedly lay claim to the neologism *ambitchous*, which is the name given to the exhibition. Like the original image material, this portmanteau of 'ambitious' and 'bitchy' is taken from social media and its creative vernacular, and is used, depending on the context, either in a derogatory fashion – for example for women who will do absolutely anything to get what they want – or positively re-interpreted as an expression of female self-affirmation.

Beavers also applies this playful and strategic complication of seemingly unambiguous contexts of meaning to the statements contained in her paintings. It remains utterly impossible to determine whether they are critically exaggerating the conformist and consumerist beauty ideals of neo-capitalism, or ascribing emancipatory potential to the conscious and confident use of make-up.

The switch in media proves to be just as ambiguous, leading to a shift in the relationship between image and viewer. Even if the subject matter remains identical, the masses of made-up eyes and lips no longer recur exclusively on perfected and/or costumed bodies implicitly promising the gratification of narcissistic fantasies. Rather they become partial objects which long to be seen, touched and desired themselves. In this way, the painting activates itself and rejects immediate gratification in favour of a mutual attraction which demands more concentrated attention from the viewer, but in exchange leaves a more lasting impression.

Even more decisive though in achieving this effect is the aggressive materiality of the paintings. Beavers applies un-thinned acrylic paint to the canvas in so many layers that the forms begin to emerge from the surface like a relief. Eyelashes, eye-lids, eye-brows and lips

are to an extent not just depicted, but mimicked in their objecthood. Eyes do not just appear to peek out from the paintings, they genuinely do so; mouths do not just seem voluptuously curved, but in actual fact bulge toward the viewer.

Nevertheless there is nothing naturalistic about the paintings, rather they exaggerate the comic-like artificiality of the serial close-ups from the original image material, and convey – perhaps similarly to poster art precisely through their conscious distance from reality – a more vivid impression than a 3D rendering, for instance, could ever achieve.

Elements such as brushes, lipsticks or fingers, which are intended to reassure the viewers of the videos of the imitability of the make-up procedures, here allude to the active role of the painting – which does not just stare or make eyes at the viewer, but rather seems to paint itself with the accessories depicted – literally building a bridge extending out from the image. Suspended between painterly illusion and sculptural presence, the work does not allow the gaze to come to a rest, and the body as well is compelled to respond to the direct address of the countless provocative eyes and mouths.

Above all, this calculated unsettling effect creates a distance from habitual patterns of perception, and makes the viewer conscious of the fact that what is depicted in an image is always already fused with the emotions it produces or seeks to produce – and that this structure is not, for example, something that is specific to the 'post-truth' world. Truth and desire have never been independent, objective values, since they are interdependent insofar as truth only becomes a relevant category for us when it directly or indirectly affects us and vice versa. It must be continually constructed anew in and for every specific situation.

Therefore it is not the relation between image and reality that is problematic, but rather the mode of connecting images with each other. Increasingly, algorithms which exclusively create relationships between images according to similarity (for example, hashtags) are determining the connections that we (are able to) see, reducing contexts to what can be expected (and marketed). Unforeseen leaps or unlikely connections – all those combinations which a more complex form of perception would afford – are lost in the process. The task of art will be to provide us with an awareness of this self-imposed loss, and to develop alternative forms of reference. And this is precisely the direction in which Gina Beavers' art embarks.

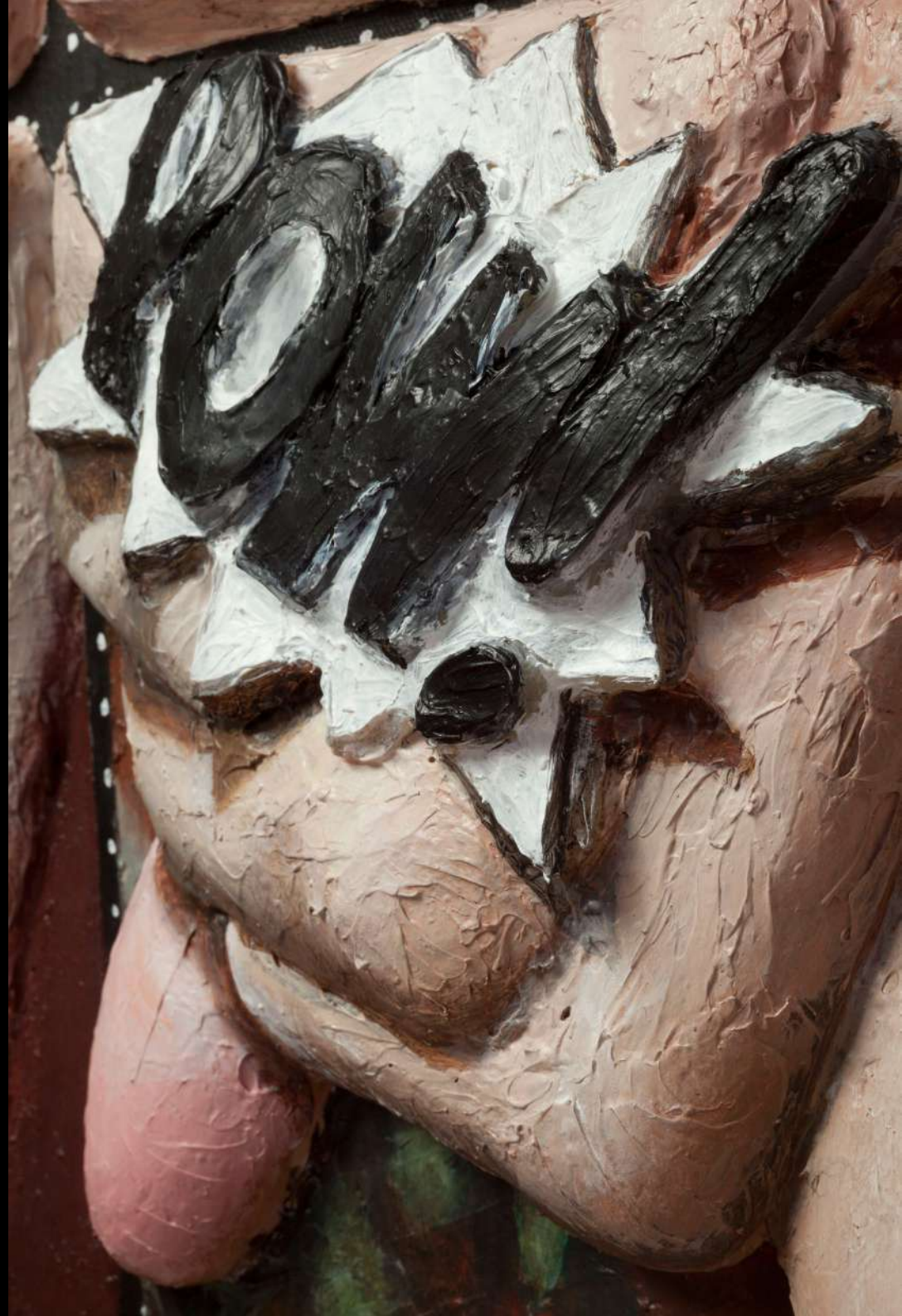
Singularly Multiple: Remarks on the Painting of Gina Beavers, by Ellen Blumenstein



Installation view: Gina Beavers, *Ambitious* solo exhibition at GNYP Gallery in 2017

My father has two paintings of mine in his study: one before I went to grad school and one after I graduated. The work before I went is a very cartoonish kind of narrative, not so different from what I'm doing now. The work after is a purely abstract painting – I used tape for the edges! In grad school I got heavily into abstraction. It was an important phase, but it wasn't totally me.

Gina Beavers



Selected Solo Exhibitions

2021

to be titled, Kunstverein Essen (Germany) // upcoming

2020

World War Me

Marianne Boesky Gallery, New York (USA)

2019

Humble but hungry

GNYP Gallery, Berlin (Germany)

Gina Beavers - The Life I Deserve

MoMA PS1, New York (USA)

Hilarisad

Carl Kostyál, Milan (Italy)

2018

Gina Beavers

Michael Benevento, Los Angeles (USA)

2017

Tennis Ball Yellow

Carl Kostyál, London (UK)

AMBITCHOUS

GNYP Gallery, Berlin (Germany)

2015

Popography

Michael Benevento, Los Angeles (USA)

2014

Re - Animator

Clifton Benevento, New York (USA)

Selected Group Exhibitions

2020

Friends and Friends of Friends - Artistic Communities in the Age of Social Media

Schlossmuseum, Linz (Austria)

Next of Kin

VSF Seoul, Seoul (South Korea)

Image Power

Museum Frans Hals, Haarlem (Netherlands)

2019

Für Christa – Christa Dichgans mit Freunden, Zeitgenossen und Verehrerinnen

CFA, Berlin (Germany)

PAINTING/SCULPTURE

Marianne Boesky Gallery, Chelsea (USA)

2017

Call me' Summer show

Carl Kostyál, Stockholm (Sweden)

American Genre: Contemporary Painting

ICA Maine College of Fine Art (USA)

Look At Us!

GNYP Gallery, Berlin (Germany)

We might not have a planet left soon

Galerie Kornfeld, Berlin (Germany)

2015

Greater New York

MoMA PS1, New York (USA)

Residencies & Prizes

2018

Matera Artist Residency, Masseria Fontana di Vite, Matera (Italy)

Permanent Collections

Institute of Contemporary Art Miami (USA)

The Tel Aviv Museum of Art (Israel)

Whitney Museum of American Art (USA)

CONTACT & INQUIRIES

GNYP Gallery

Knesebeckstraße 96
10623 Berlin

+49 (0) 30 31 01 40 10

office@gnypgallery.com
www.gnypgallery.com